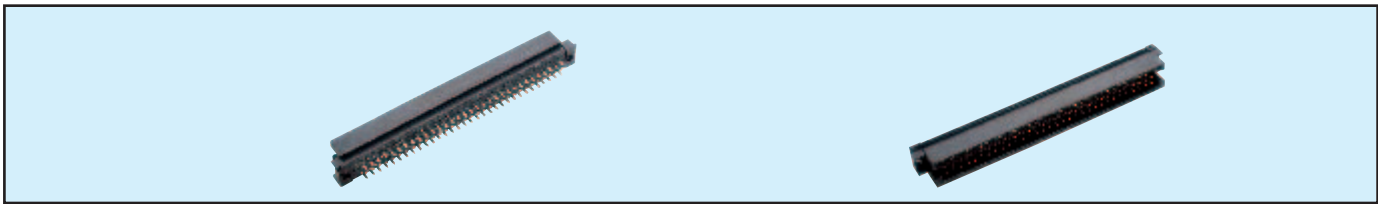


Male Style R High Temperature



Series 8577 – 3 rows (3 x 32) Inverted

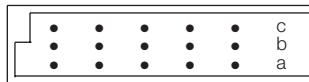


Contact Design and Termination Length	Number of Contacts	Loading Description	Part Number	
			Performance classes according to DIN 41612	
			II	I
2.9 mm (Y) Straight	96	a + b + c fully loaded	10 8577 096 001 025	10 8577 096 001 049
	64	a + c fully loaded	10 8577 096 001 026	10 8577 096 001 050
	32	a + c even loading	10 8577 096 001 033	10 8577 096 001 057
	32	a loading only	10 8577 096 001 027	10 8577 096 001 051
	46 + 2	fully loaded + ground	10 8577 096 101 025	10 8577 096 101 049
4.5 mm (Y) Straight	48	a + b + c fully loaded	10 8577 096 002 025	10 8577 096 002 049
	32	a + c fully loaded	10 8577 096 002 026	10 8577 096 002 050
	16	a + c even loading	10 8577 096 002 033	10 8577 096 002 057
	16	a loading only	10 8577 096 002 027	10 8577 096 002 051
	46 + 2	fully loaded + ground	10 8577 096 102 025	10 8577 096 102 049

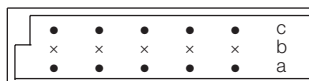
NB: Alternative Prefix Variations Available: 16, please refer to Page 10.

Additional Plating & Loading Variations: Please contact your local AVX sales office or distributor.

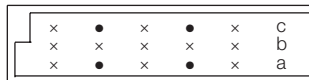
LOADING DESCRIPTION



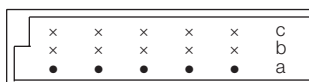
96 contacts, rows a + b + c fully loaded



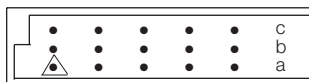
64 contacts, rows a + c fully loaded



32 contacts, rows a + c even loading



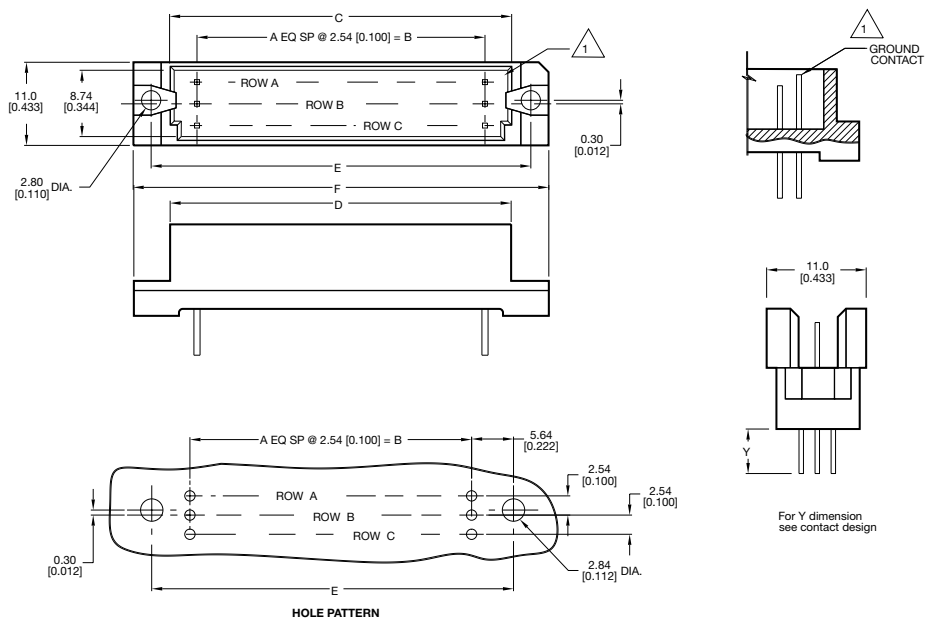
32 contacts, row a loading only



96 + 2 contacts, fully loaded with ground in A1 & A32

△ denotes ground pin

DIMENSIONS



Unit: millimeters (inches)

No. Contact Positions	Contact Rows	A	B	C	D	E	F
96	3 (3 x 32)	31	78.74 (3.100)	85.29 (3.358)	87.91 (3.461)	90.00 (3.543)	94.89 (3.736)